



Wi-Fi Smartphone WP856

The WP856 is a Wi-Fi smartphone with built-in scanner that provides a powerful communication and productivity solution for users on the go. The WP856 runs Android™ version 13 and is certified with Google Mobile Services, allowing it to provide an easy-to-use interface with access to millions of Android apps. This Wi-Fi smartphone supports integrated dual-band Wi-Fi 6 and offers an advanced antenna design and roaming support to ensure a reliable and stable connection in all environments. The WP856 has a built-in scanner for scanning 1D and 2D barcodes and supports near-field communication (NFC) to allow the device to exchange data with other NFC devices. It sports a 5.5 inch high-definition touch screen, provides extended talk-time of up to 20 hours, and supports Bluetooth 5.2 and Bluetooth Low Energy (BLE). Ideal for demanding environments, the WP856 is IP65-rated waterproof and dustproof while being drop-safe from a height of 1.5 meters. By providing mobile workers with top-notch voice quality along and instant access to real-time information, the WP856 provides an all-in-one solution that is ideal for enterprises, warehouses, logistics, retail, healthcare, and more.



Built-in scanner for scanning 1D and 2D barcodes



Supports up to 6 SIP accounts and 6 lines



HD voice with advanced Acoustic Echo Cancellation & Noise Shield Technology



5.5 inch HD multi-touch capacitive touch screen with 2.5D Corning 3rd generation glass



A rechargeable 5000mAh battery provides up to 20 hours talktime and 200 hours standby, USB Type-C port, supports fast charging



Dual-band Wi-Fi 6 with an advanced antenna design and fast roaming support



IP65-rated waterproof and dustproof, drop-safe from up to 1.5 meter height

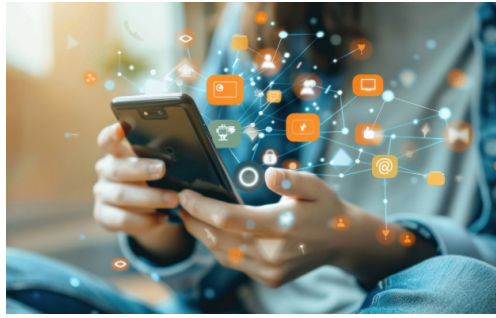


Runs Android version 13, certified with Google Mobile Services, access to Google Play Store, supports custom Android apps



An All-in-One Mobility Solution

The WP856 provides the ideal solution for busy workers on-the-move. It combines calling, messaging, Android apps, a scanner, and a NFC device into a durable, lightweight device. The WP856 is easy to use and carry, making it the perfect companion for busy days.



Behold the Power of Android

By running an open version of Android v13, users can access and utilize the millions of apps on the Google Play Store, allowing the WP856 to offer unlimited usage scenarios and customization options. This Wi-Fi Smartphone is certified with Google Mobile Services.



Scan, Exchange, and Collect Data

With a built-in 1D and 2D scanner, support for NFC (near-field communications), and a 13MP camera, the WP856 is ideal for warehouses, retail stores, medical facilities, and similar environments. Users can quickly scan barcodes, collect data, and exchange data with the WP856.



Durable and Rugged

The WP856 is designed to stand up to any demanding environment. It is IP65-rated waterproof and dustproof, drop-safe from 1.5 meters, and utilizes an antimicrobial casing. This ensures that the WP856 can thrive in any environment, no matter how demanding, and stay clean while doing so.



Seamless Connectivity

By utilizing Wi-Fi 6 technology, the WP856 will provide optimal performance on even the most crowded networks. The WP856 also adds an advanced antenna design and fast-roaming support, ensuring an optimal, seamless experience anywhere within a Wi-Fi environment.



Ensure Worker Safety

The WP856 provides built-in alarms that allow the device to alert other users in emergency situations. Pressing a preset alarm button will alert other team members of duress. The WP856 can also recognize falls, running, no-movement, and more, alert others accordingly in real-time.

Deployment Scenarios



Businesses



Warehouses



Retail



Healthcare

Processor	2.2 G octa-core 64-bit processor
Operating System	Android 13 , Google Mobile Services certified
Memory	RAM: 4GB ROM: 64GB
Interface	Type-C 2.0 OTG; Support USB Type-C headset
Protocol/Standards	SIP RFC3261, TCP/IP/UDP, RTP/RTCP, HTTP/HTTPS, ARP, ICMP, DNS (A record, SRV, NAPTR), DHCP, SSH, TFTP, NTP, STUN, SIMPLE, LDAP, TR-069, 802.1x, TLS, SRTP, IPv6
Wi-Fi	Dual-band (2.4GHz and 5GHz) Wi-Fi 6 (IEEE 802.11a/b/g/n/ac/ax) 2.4G supports 20/40MHz bandwidth, 5G supports 20/40/80/160MHz bandwidth
Voice Codecs and Capabilities	Support for G.711µ/a, G.729A/B, G.722 (wide-band), iLBC, Opus, in-band and out-of-band DTMF (In audio, RFC2833, SIP INFO), VAD, CNG, AEC, PLC, AJB, AGC, ANS
Video Codecs and Capabilities	H.264 BP/MP/HP, video resolution up to 1080p, frame rate up to 30 FPS, bit rate up to 20Mbps, 3-way video conference (1080p at 30 FPS), anti-flicker capability, auto focus and auto exposure
Customizable Function Keys	Customizable button for scan, push-to-talk, panic call, and other related functions
Bluetooth	Yes, Bluetooth 5.2, supports Bluetooth Low Energy (BLE)
Scanner	CMOS (≥5 mil) 1D: Code128, Code 49, Code 16K, (GS1128) UCC/EAN-128, AIM-128, EAN-8, EAN-13, UPC-E, UPC-A, ITF, ITF 6, ITF 14, Matrix 2 of 5, Industrial 25, Standard 2 of 5, Code39, ISSN, ISBN, CodaBar, Code93, Code 11, Plessey, MSI Plessey, RSS 2D: Aztec, Composite, CS Code, Maxicode, Micro PDF, Micro QR, PDF 417, QR Code, Data Matrix, DotCode.
Near-Field Communication (NFC)	13.56MHz RFID ISO14443A/B, ISO15693, ISO18000-3, MIFARE, FeliCa RF, NFC Forum Type 1-4 Tag
Telephony Features	Hold, transfer, forward, 6-line audio conference, downloadable phonebook (XML, LDAP, up to 1000 items), call waiting, call log (up to 1000 records), off-hook auto dial, auto answer, click-to-dial, flexible dial plan, hot desking, personalized music ring-tones and music on hold, server redundancy and fail-over, push-to-talk
Security	User and administrator level passwords, MD5 and MD5-sess based authentication, 256-bit AES based secure configuration file, SRTP, TLS, HTTPS, 802.1x media access control
HD Audio	Yes, both on handset and speakerphone, supports wideband audio
QoS	802.11e and Layer 3 (ToS, DiffServ, MPLS) QoS
Multi-language	English, Arabic, Chinese, Czech, Dutch, German, French, Hebrew, Italian, Japanese, Polish, Portuguese, Russian, Spanish, Turkish, and more
Upgrade/Provisioning	Firmware upgrade via HTTP/HTTPS, mass provisioning using TR-069 or encrypted XML configuration file, manual upload
Display	5.5 inch (1440x720) multi-point capacitive touch screen; Up to 450 NIT (brightness), display backlight adjusts automatically
Camera	Rear camera: 13MP, auto focus, with LED flashlight Front camera: 5MP, fixed focus
GPS	Supports GPS, Galileo, and Beidou
SD Card	Supports Micro SD cards (up to 256GB)
AC Adapter	Quick charger (Output: 5V-3A/9V-2A/12V-1.5A Input: AC 100~240V, 50/60Hz)
Peripherals	Volume button(+,-), Push-To-Talk Button, Left/Right Scan Button, Power button, Vibration motor, Multi-color LED
Battery	5000mAh 3.85V rechargeable battery; 200 hours standby time and 20 hours talk time (the battery can be removed and replaced)
Microphone and Speaker	Dual microphones, HD speaker and speakerphone (1W)
Sensors	Light & Proximity sensor, accelerometer sensor, gyroscope sensor
Physical	Headset dimensions: 161x 74 x 15mm Handset weight: 0.28KG
Temperature and Humidity	Operating Temperature: -20 °C to 50 °C (-4°F to 122°F); Charging Temperature: 5-40 °C (41°F to 104°F); Storage Temperature: -20 °C to 60 °C (-4°F to 140°F);
Package Contents	Handset unit, power adapter, quick start guide, hand rope, protective shell, 3x plug adapter, Lithium battery, USB cable
Ruggedization and Protection	Dropsafe up to 1.5m height when dropped on to concrete Casing: IP65-rated waterproof and dustproof Static Discharge: ±15 kV (air discharge), ±8 kV (direct discharge)
Compliance	FCC, CE, EAC, IC, RCM